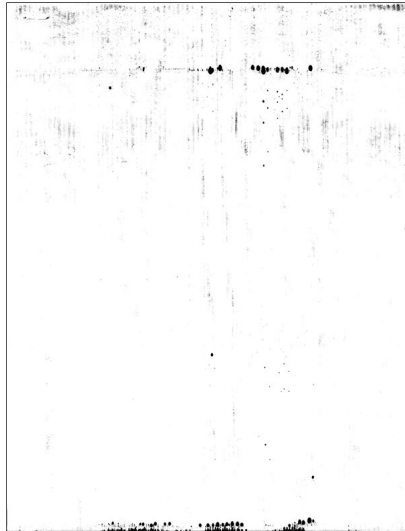


Cleaning for ink smears: internal paper path

Approximate time to complete: 3-6 minutes

If your prints have stray ink marks on the front or the back, you can correct the problem by cleaning the printer's internal paper path surfaces. The printer automatically feeds 10 sheets of paper through the print path to collect stray ink particles when you run the `Clean:Ink Smears` routine from the front panel.

Sample ink smear: internal paper path



9101-63

1. When the printer is on and the **Ready** message appears, press the **Clean** button. The printer displays the first selection in the menu:

```
Clean:Light Stripes  
<---- Clean Test
```

2. Press the left arrow (<---) button until the following message appears:

```
Clean:Ink Smears  
<---- Clean Test
```

3. Press the **Clean** button. The printer displays the following message:

```
Warming Up  
Cancel
```

4. After a short delay during the warm-up period, the printer begins an automatic sequence of feeding 10 clean sheets of paper from the upper media tray.

A front panel message indicates the number of sheets remaining to be fed. For example:

```
Cleaning:Using 10 Sheets
```

Caution *Always use clean sheets of paper to clean the paper path. Do not reuse cleaning sheets.*

Do not attempt duplex (two-sided) printing on any type of media. Ink from the back side of the paper offsets onto the internal paper path, requiring you to perform cleaning procedures.

5. When the cleaning sequence is complete, inspect the last sheet of paper fed through the printer. If it is not clean, repeat the cleaning sequence by pressing the **Clean** button once again.
6. Return the printer to normal operation by pressing the **Exit** button.

If the ink smears problem persists after running clean sheets of paper through the paper path, refer to the procedures for cleaning paper feed rollers and the paper exit path.